

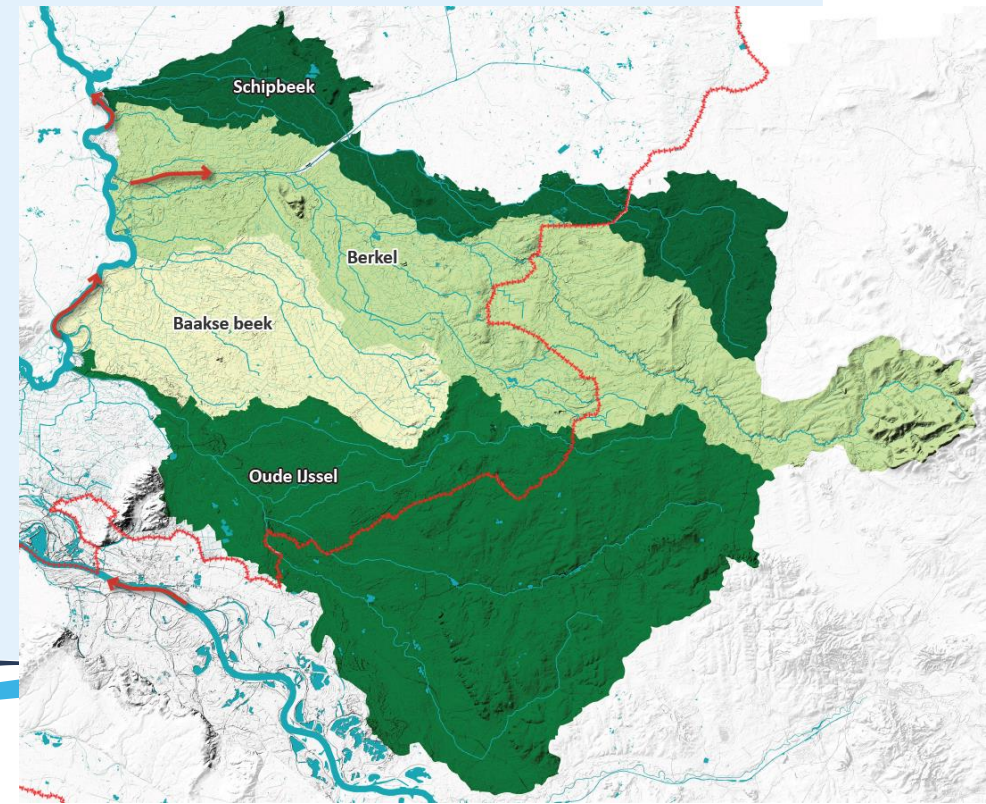


# Climate addaptation: a collaborative effort

**Ir. Wim Athmer MPM, Waterboard Rijn and IJssel,  
manager department 'Advice and Strategy'**

# Contents

1. Financial arrangement for water projects
2. Collaborative approach on drought in 'De Achterhoek'
3. Our practice in water projects
  - No-regret measures (short-term)
  - Collaborative and integrative water projects on estates in the water catchment area of the 'Baakse beek'
  - Collaborative and integrative (regional development) planning in the area of Winterswijk







# Essence for successful governance

- Bring some money to deal : makes us as serious partner
- Bring knowledge the society needs: makes us a serious partner
- And never forget for wich goal and by whom we are founded
  - Landowners: Agricultural, nature, Estate, Citizins with land and houses, industrial companies
  - So make plans with them together: participation
- Make practical measures happen in short time!
  - A new dike, better waterlevel, a more biodiverse brook, river

# 1. Financial arrangement for water projects

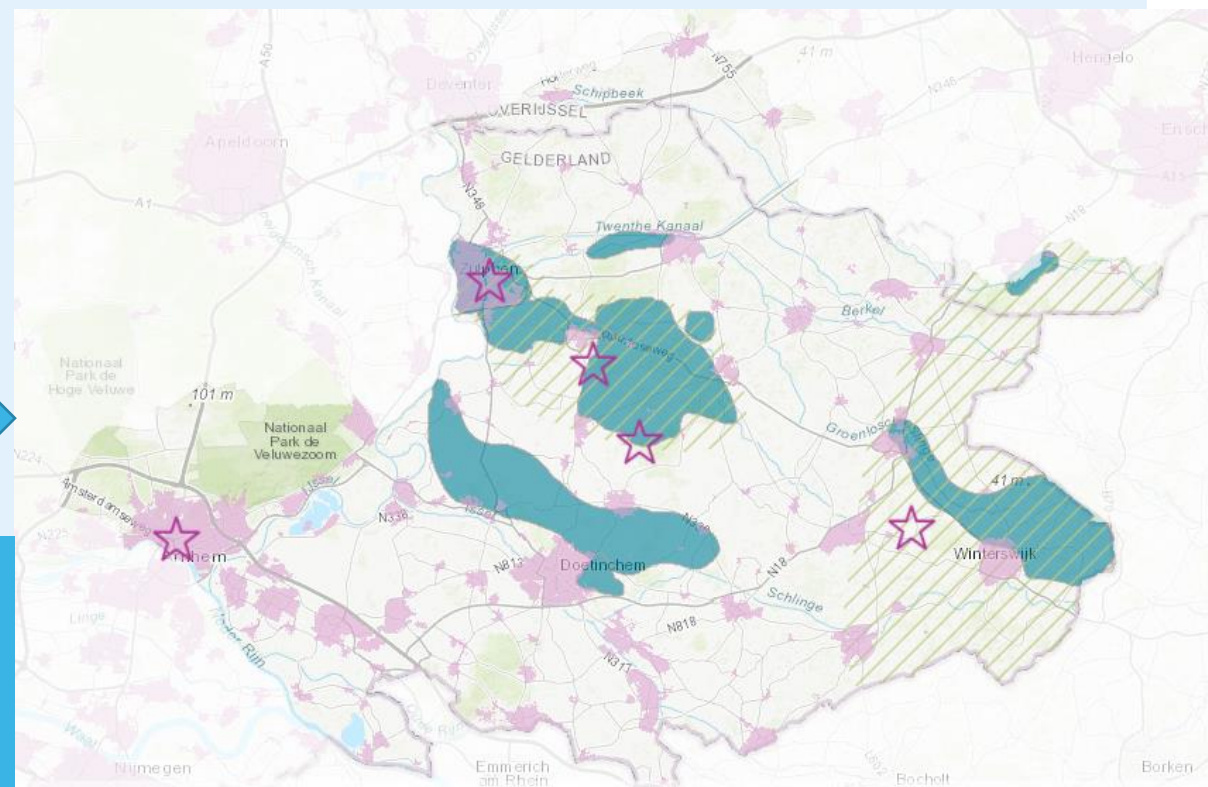
## Delta Programme; Delta Plan on fresh water supply (drought)

Regional agreement; 50 million Delta Fund; 150 million regional parties



Projects Waterboard Rijn&IJssel (20 million):

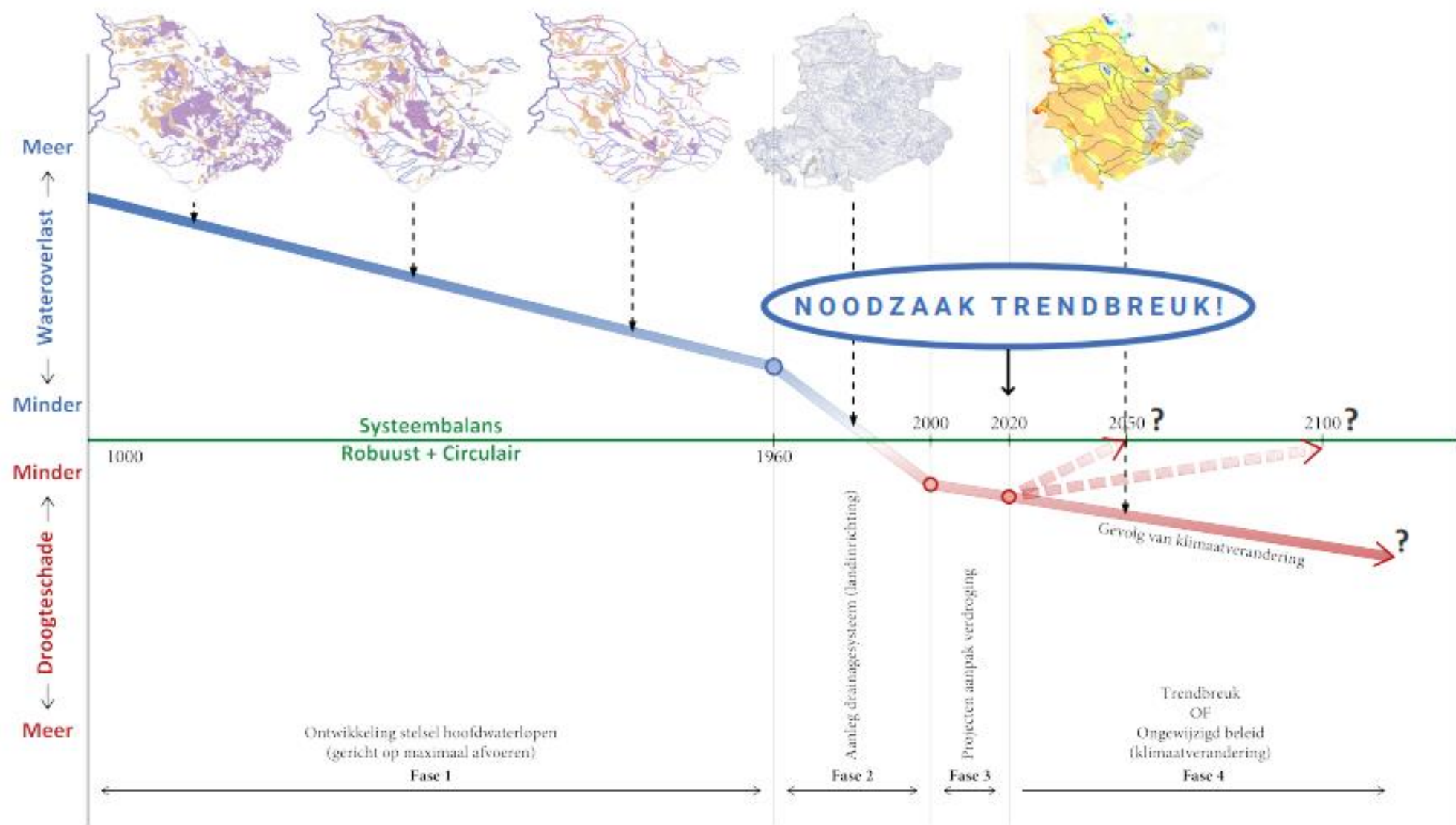
- 25 % Delta Fund
- 75 % Waterboard and Province of Gelderland (+/- 50%)



## Role of the waterboard in water projects:

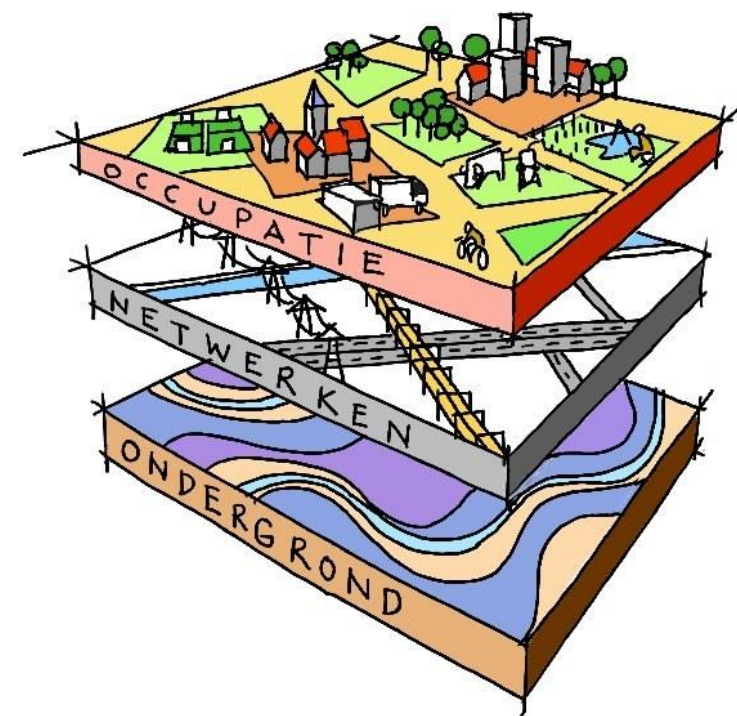
1. Finance (own tax arrangement)
2. knowledge
3. Implementation or execution

# Shift in balance = shift in mindset = societal task



# Societal task → collaborative approach

1. Water-soil as a precondition for development
  - Water and soil on the agenda
  - Societal costs of drought, flooding, water quality
2. Collaborative effort
  - Regional and local governments
  - Nature organisations, agricultural organisations, drinking water company
3. Integrative approach
  - Drought, flooding and water quality
  - Related issues: agricultural and urban development, biodiversity, EU Habitat Directive, EU Water directive, drinking supplies





# PARTNERS in COLLABORATIVE APPROACH on DROUGHT



## Organisation

- Regional agreement (renew every 2 year, feb. 2022)
- Board (all stakeholders)
- Executive team (alle stakeholders)

Board and executive team consisting of representatives:

- ✓ **Governmental organisations** (waterboard, province, municipalities)
- ✓ **Non-governmental organisations** (nature and agricultural organisations, drinking water company)

## Mutual actions

- Action perspective: no regret measures,
- analyses long term strategy (fundamental change is necessary!)
- Field labs (learning by doing)
- Collaborative communication



### **No-regret measures (short-term): Programme 'Every drop of water counts'**

- Programme of 5 million euros (!) financed by
  - Waterboard Rijn and IJssel
  - province of Gelderland
  - Delta fund (national)
- At the kitchen table with hundreds of farmers (at their own request!)
- Hands on, facilitating the common mind step (awareness) , executed by our waterboard





## 2. Our practice in water projects

### Collaborative and integrative water projects in the water catchment area of the 'Baakse beek'

- Integrative nature and water projects at 7 estates
- Decision-making:
  - Waterboard Rijn and IJssel
  - Province of Gelderland
  - Municipality of BronckhorstIn consultation with estate owners, and farmers organisations (LTO)
- Financed by province and water board
- Execution by a project team (water board Rijn and IJssel)



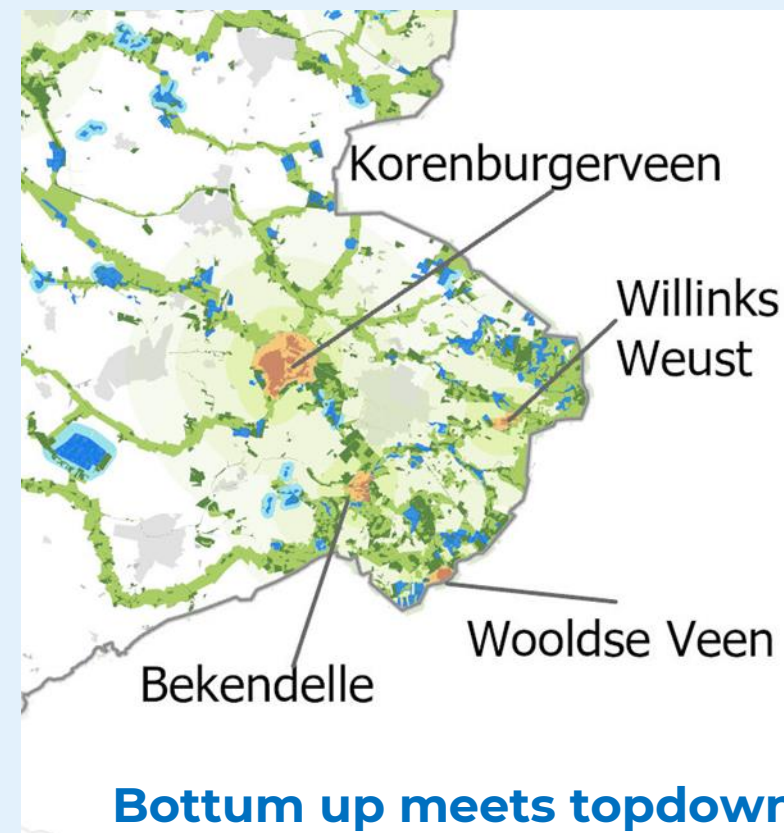
### Project estate Wildenborch

Waterboard, landowners and land users (estate owners and surrounding farmers)



# Collaborative and integrative (regional development) planning in the area of Winterswijk

- Partners:
  - Waterboard Rijn and IJssel
  - Province of Gelderland
  - Municipality of Winterswijk
  - WCL (local representatives)
- Collaborative and integrative planning:
  - Water (drought, flooding)
  - Nature 2000 (Habitat Directive) (Nitrogen)
  - Water Frame Directive (2027)
  - Regional development / economy
- Fieldlab / pioneer Dutch National Programme for Rural Areas (national fund: 25 billion 2023 – 2035)
  - Habitat Directive (Nitrogen, nature restoration)
  - Water Directive
  - Climate adaptation and regional issues (drought)





# Essence for successful governance

- Bring some money to deal : makes us as serious partner
- Bring knowledge the society needs: makes us a serious partner
- And never forget for wich goal and by whom we are founded
  - Landowners: Agricultural, nature, Estate, Citizins with land and houses, industrial companies
  - So make plans with them together: participation
- Make practical measures happen in short time!
  - A new dike, better waterlevel, a more biodiverse brook, river, etc..





**Thank you for your attention!**  
**Any questions?**